

PluggLine designer covers

A WORLD'S
FIRST

Fresh air with style – perfect!

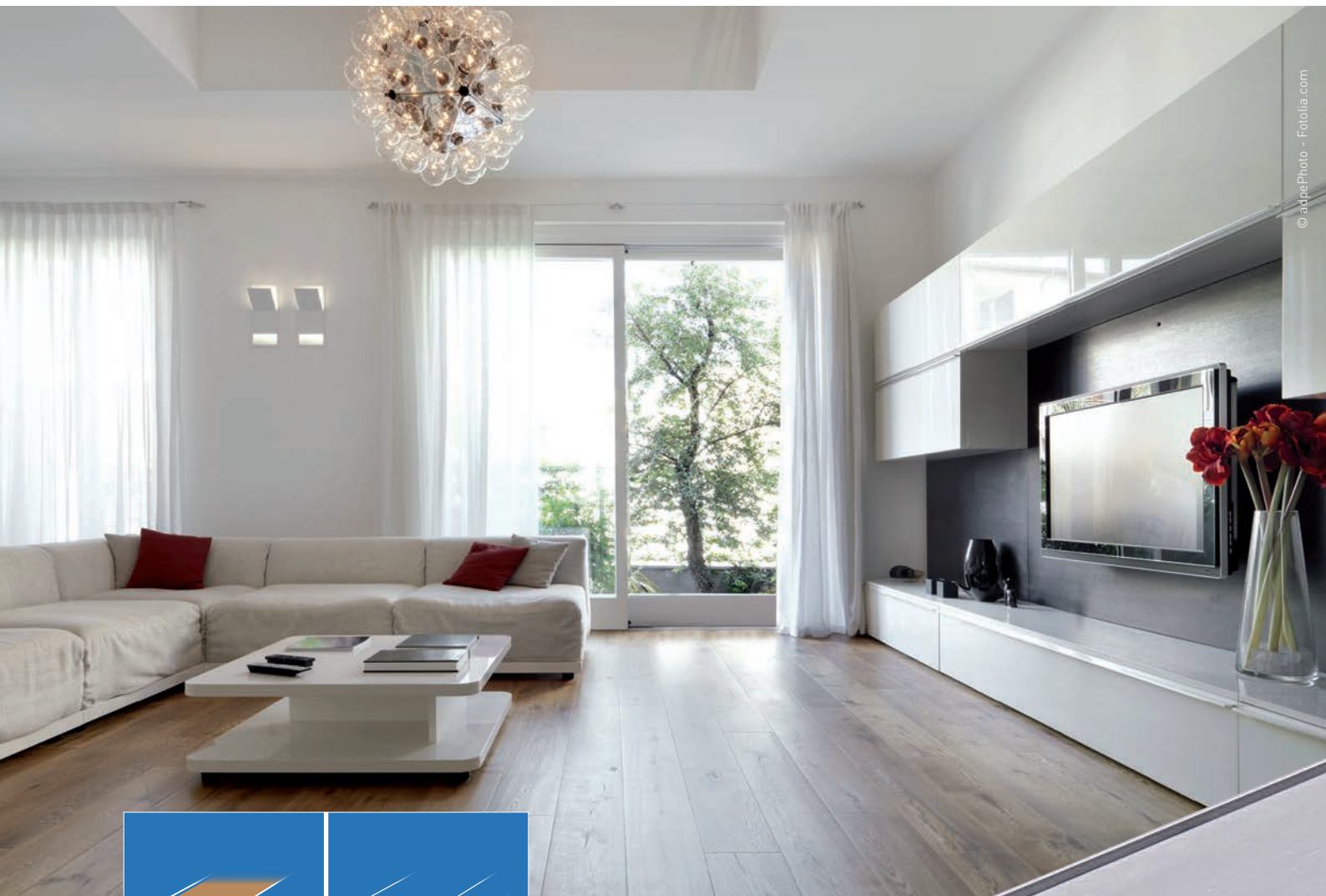


The flush-mount designer floor air outlet for all floors

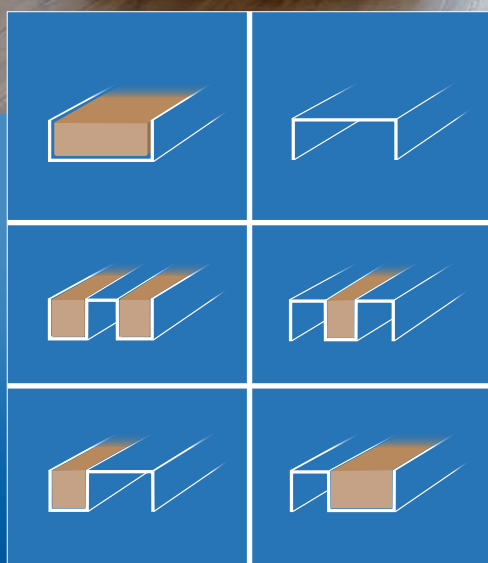
- Winner of the iF product design award 2013
- For all floor installation heights ranging from 130 mm up to 190 mm
- Premium-quality stainless steel design

1 Idea – 3 versions – 6 possibilities

The flush-mount designer floor air outlet for all surfaces



© adpPhoto - Fotolia.com



1 idea

3 versions

6 possibilities

+ for all surfaces = 1.000 + 1 option



Variety with sophisticated designs

Today, room ventilation systems with heat recovery are part of sophisticated and comfortable home decor. The new designer floor air outlet PluggLine harmoniously integrates itself in every ambience. The intelligent casing design offers numerous elegant design variations to match the individual style of interior decor.

**A WORLD'S
FIRST**



The most important technical requirement to be met by a floor air outlet is stability. Thanks to its highly resistant stainless steel design, the PluggLine easily meets all requirements in residential building.

We have a great deal of fresh air for you

The flush-mount designer floor air outlet for all surfaces

Parquet

The innovative stretched form of the PluggLine casing perfectly matches parquet and floors with floorboard appearance.



Carpet

Textile coverings are perfectly suitable for shaping the designer covers in stainless steel and the matching carpet pattern alternately.



Natural stone

Marble, granite & Co. enjoy increasing popularity also in interior decoration. It's perfect when the floor air outlet discreetly takes a back seat to the overall visual appearance.



Use the PluggLine designer cover in combination with the floor covering at your discretion*.



Ceramic, tiles

Ceramic coverings can be cut exact to the millimetre to the internal dimensions of the casing, after that the tile can be fitted into place.

Cork, linoleum

Here you will find as a mirror image version of the carpet example a version with only one slim centrally arranged stainless steel strip between the existing cork covering.



Other

For enthusiasts of asymmetric shape the designer cover also is available with a two-thirds / one-third layout of floor covering and stainless steel surface.

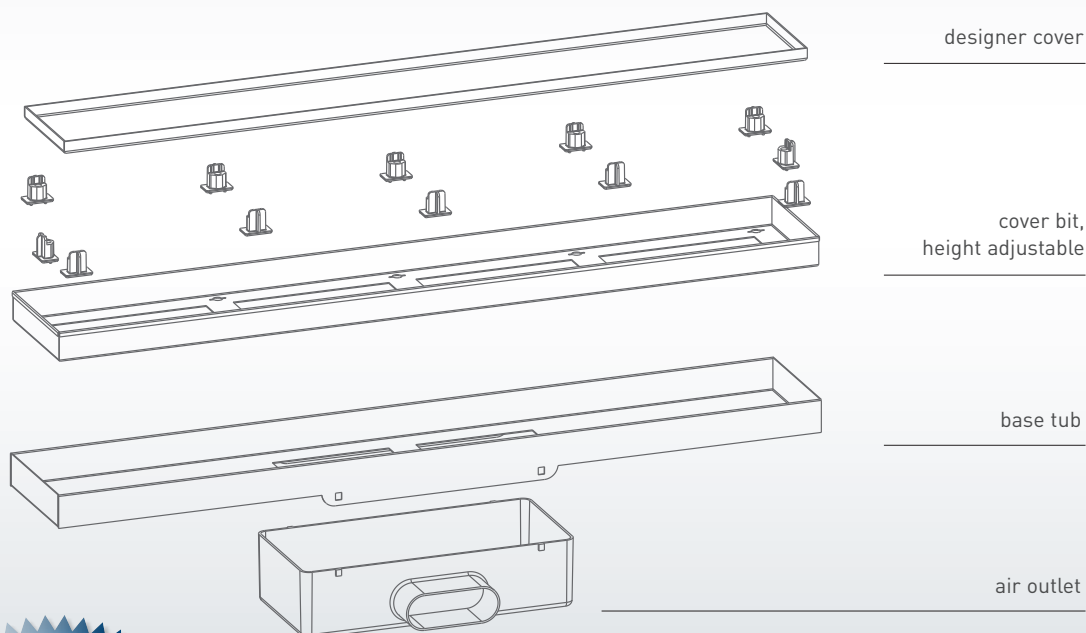
* in case of floor coverings with a height < 6 mm a compensating plate is required by the customer

Advantages – simple installation

The flush-mount designer floor air outlet for all surfaces

Installation floor box

As always with PLUGGIT the installation of the PluggLine is uncomplicated and quick to carry out. Due to the height adjustment the stainless steel casing can be adjusted flush to the existing installation height or the thickness of the floor covering respectively. The variety ranges up to an installation height of 130-190 mm top edge of the unfinished floor.



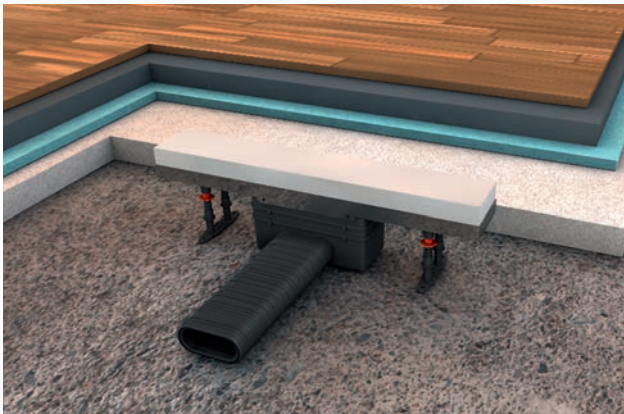
**A WORLD'S
FIRST**



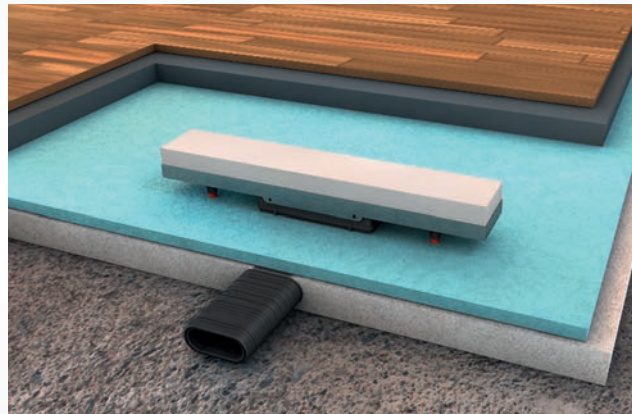
Using the polystyrene strip (l.) the top edge of the screed surface can be represented symbolically; floor structure and position of the casing can be exactly matched to the floor box using the adjustable supports and attachments.

Advantages

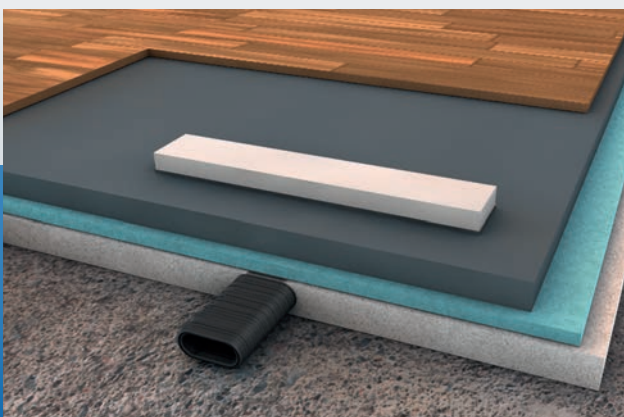
Perfectly matched system components ensure an uncomplicated and time and cost saving installation of the designer floor air outlet PluggLine. The flexible installation allows for flushness to the exact millimetre between the floor covering and the surface of the casing.



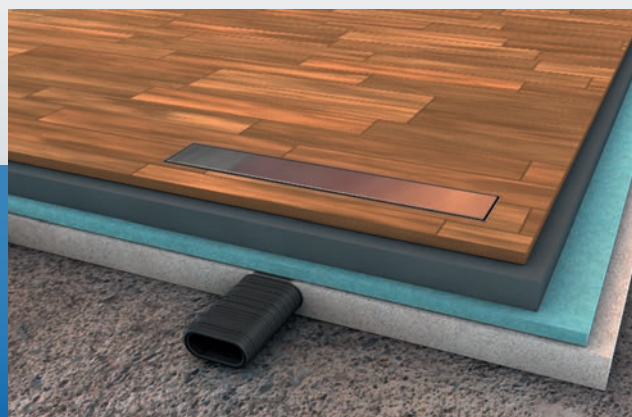
Concrete ceiling: The base tub can be exactly positioned thanks to the height adjustable feet. It is placed on the air outlet.



Insulation layer: The insulation layer is installed below the top edge of the base tub depending on the screed height.



Screed: The screed is flush laid with the top edge of the base tub. An insulation strip circulating the base tub and the polystyrene block can be applied.



Remove polystyrene strip, place height adjustable cover bit in the base tub and adjust - finished. The desired floor covering can now be laid on the screed and thus forms a flush whole with the designer cover.

Further good ideas of



- **PluggLine** – Flush-mount standard covers
- **PluggFlex R** – Round ventilation pipes for installation in wet concrete
- **Pluggit Avent** – The modular ventilation units (Basic to Premium version)
- **PluggVoxx** – The most healthy air for your home

